



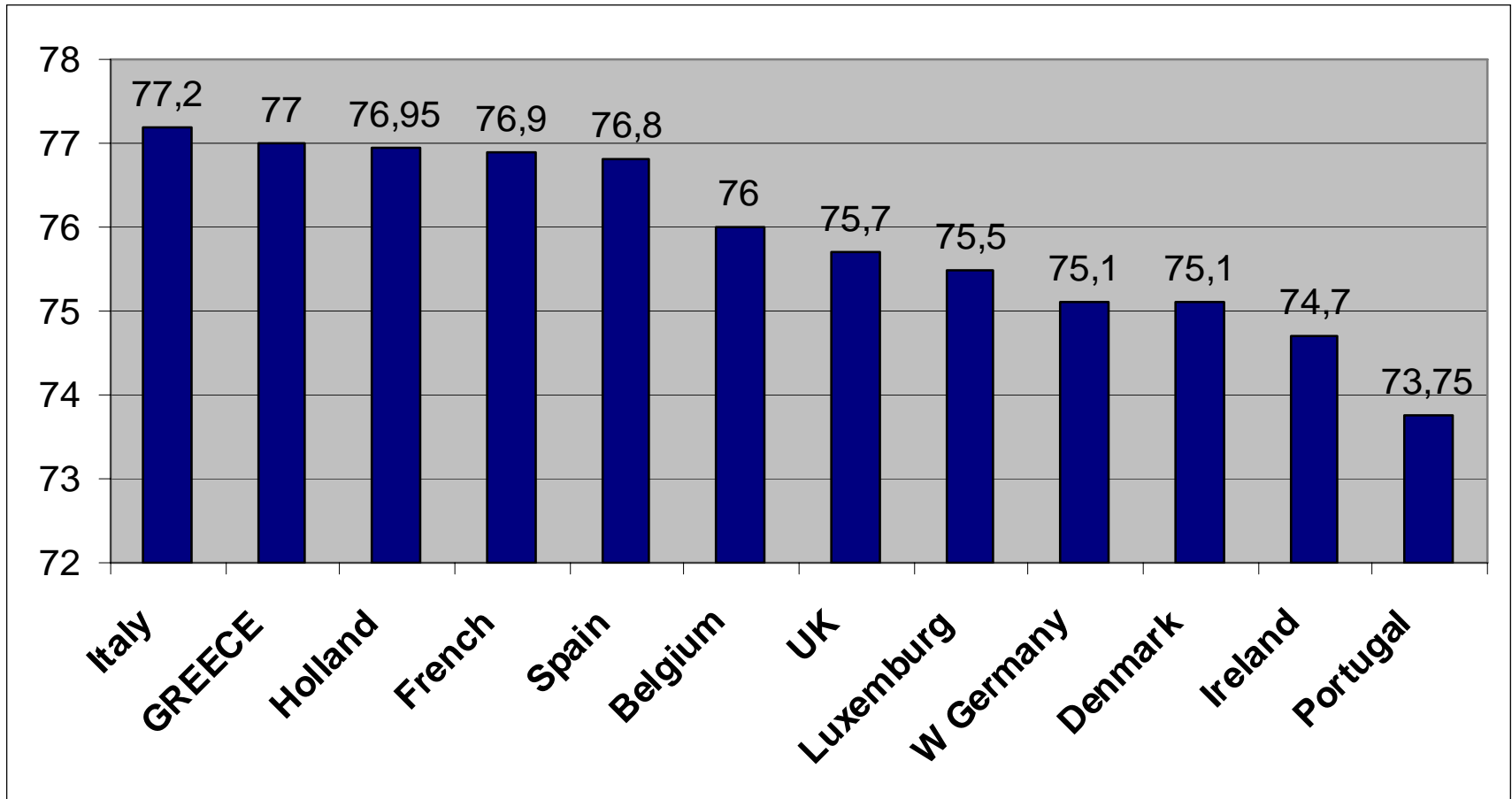
NATIONAL HEALTH SURVEY
***HELLAS HEALTH I*: DIFFERENCES BETWEEN**
URBAN AND RURAL POPULATION

YANNIS TOUNTAS

IZMIR, SEPTEMBER 2007

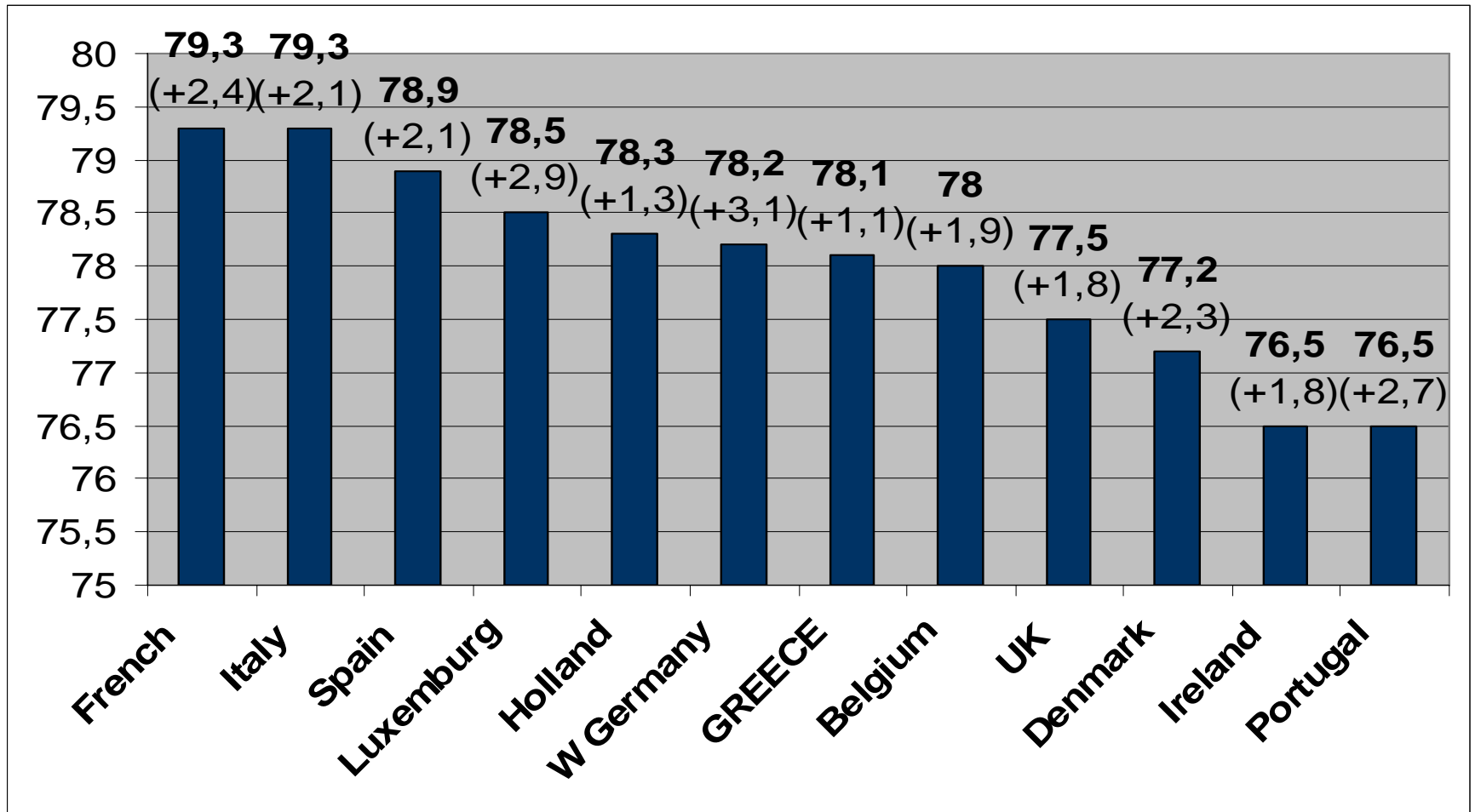
Life expectancy

E.C. 1990



Life expectancy

E.C. 2001



Main causes of mortality and disability adjusted life years

(WHO, 2006)

| | DEATHS | % | | DALYs | % |
|--|---------|------|------------------------------|-----------|-----|
| Cerebrovascular disease | 22,694 | 19,9 | Cerebrovascular disease | 13,517 | 9,4 |
| Ischaemic heart disease | 16,825 | 14,8 | Ischaemic heart disease | 111,885 | 8 |
| Lung/trachea/bronchus cancer | 6,274 | 5,5 | Unipolar Depression | 72,775 | 5,2 |
| Rectum/colon cancer | 2,948 | 2,6 | Road traffic accidents | 51,404 | 3,7 |
| Upper respiratory infections | 2,375 | 2,1 | Hearing loss (adult onset) | 50,397 | 3,6 |
| Road traffic accidents | 2,152 | 1,9 | Alzheimer-dementias | 50,146 | 3,6 |
| Liver cancer | 2,038 | 1,8 | Lung/trachea/bronchus cancer | 48,553 | 3,5 |
| Breast cancer | 1,999 | 1,8 | Alcohol use disorders | 48,424 | 3,5 |
| Stomach cancer | 1,831 | 1,6 | Diabetes mellitus | 38,437 | 2,8 |
| Chronic Obstructive Pulmonary Diseases | 1,784 | 1,6 | Osteoarthritis | 35,509 | 2,3 |
| All causes | 113,981 | 100 | All causes | 1,393,137 | 100 |

Main risk factors for mortality and morbidity


(WHO, 2006)

| MORTALITY | % | MORBIDITY | % |
|----------------------------|-------------|----------------------------|-------------|
| High blood pressure | 25 | Tobacco use | 12,9 |
| Tobacco use | 19,3 | High blood pressure | 11,8 |
| High blood cholesterol | 11,6 | High BMI | 8,5 |
| High BMI | 8,3 | High blood cholesterol | 7,6 |
| Physical inactivity | 5 | Alcohol abuse | 4,3 |
| Low fruit/vegetable intake | 3,9 | Lack of physical exercise | 3,5 |
| Environmental pollution | 0,6 | Low fruit/vegetable intake | 2,6 |
| Unsafe sexual activity | 0,5 | Illicit drugs | 1,7 |
| Workplace carcinogens | 0,4 | Unsafe sexual activity | 0,8 |
| Illicit drugs | 0,3 | Iron deficiency | 0,5 |
| Total | 74,9 | Total | 54,2 |

HELLAS HEALTH I

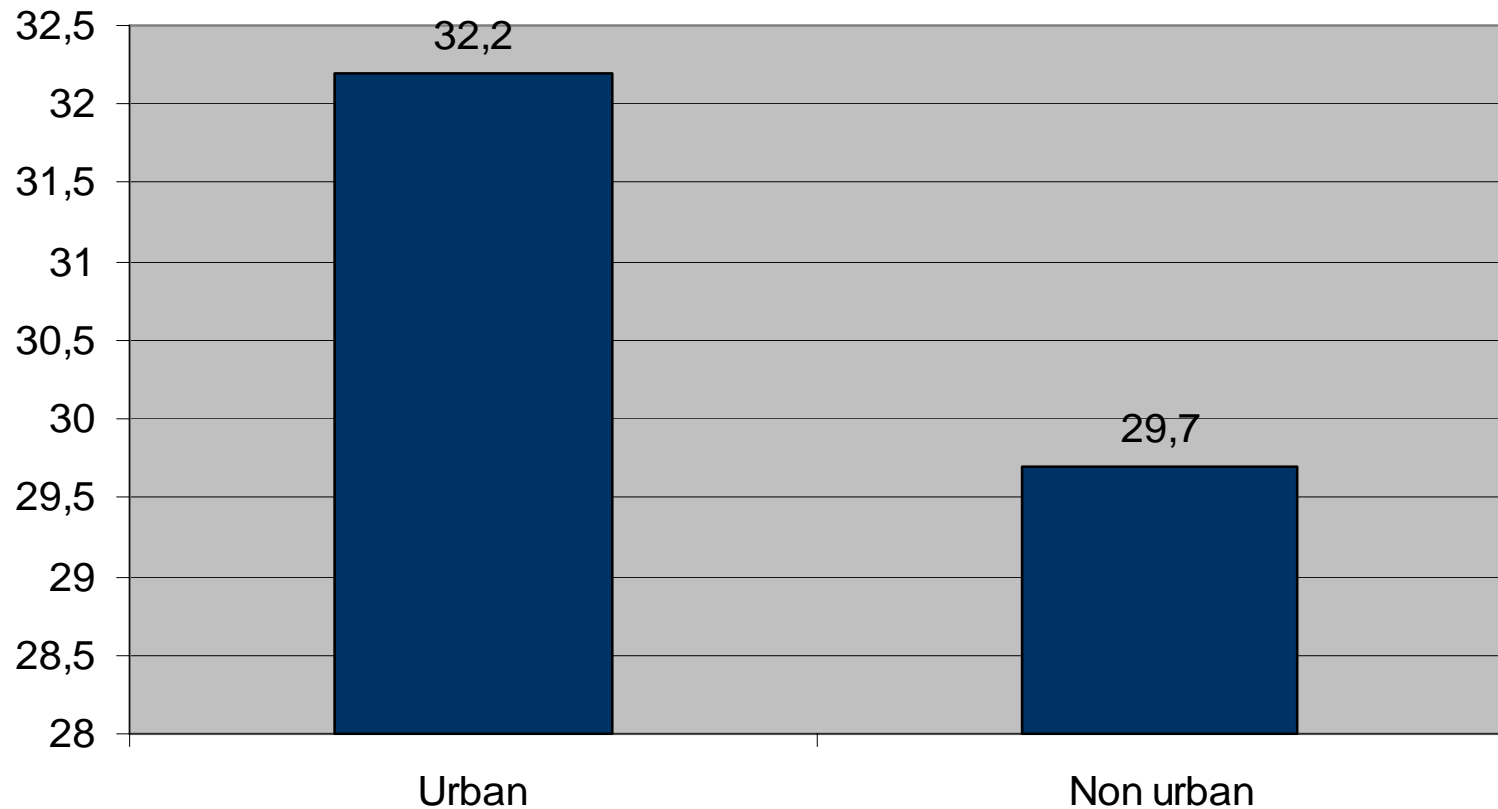
- National household survey (Sept/Oct of 2006).
- Survey population : 1,005 individuals, 18 - 65+ years old
- Urban areas (2,000 or more inhabitants) and rural areas (less than 2,000 inhabitants)
- Three stage, proportional to size sampling design
- Effective response rate 44.5%
- Representative sample in terms of age and residency according to 2001 Population Census

Percentages of population reporting smoking

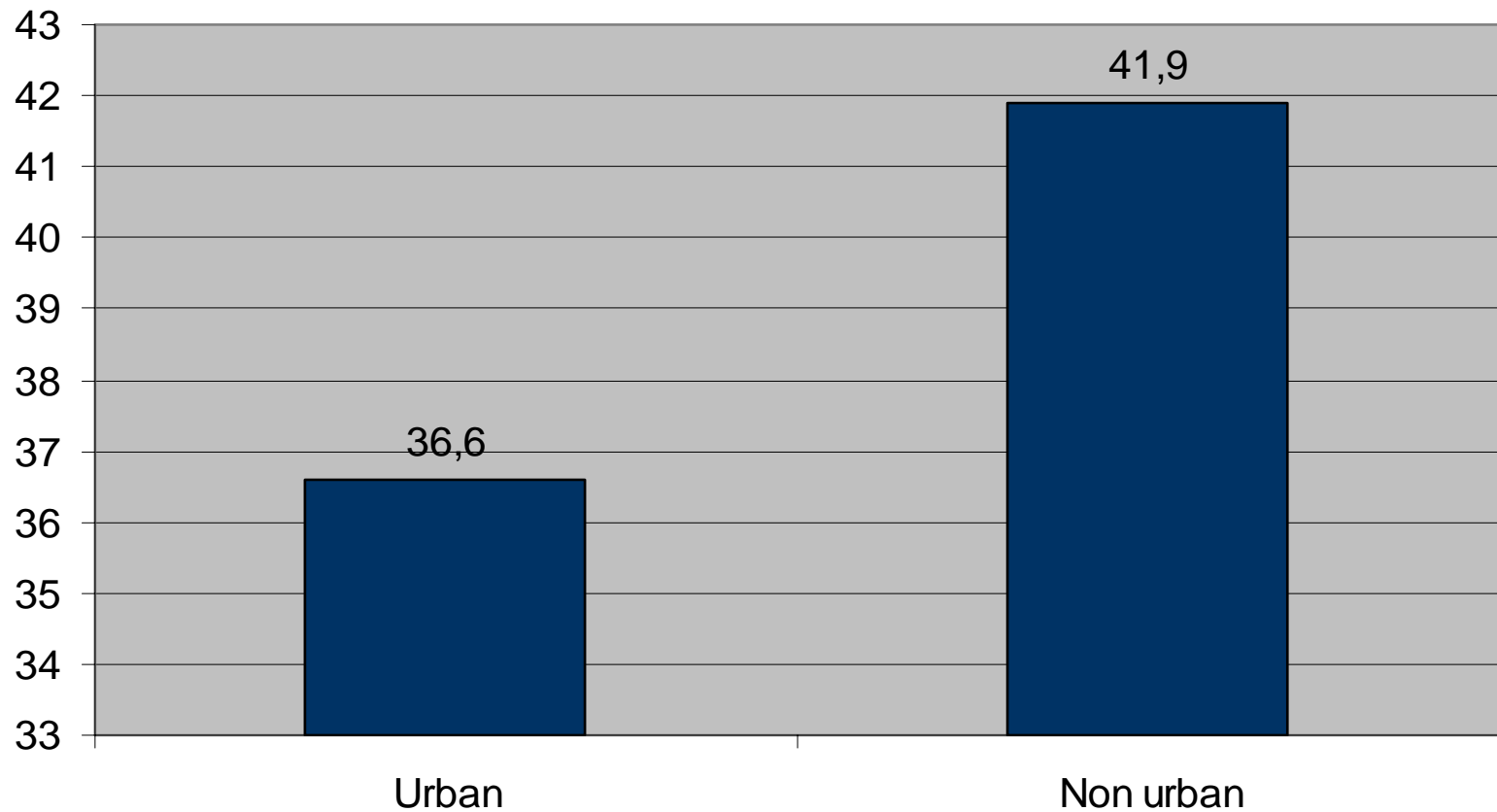


| | Total | Urban | Non-urban |
|-----------------------|--------------|--------------|------------------|
| Yes, everyday | 40,0% | 42,5% | 32,5% |
| Yes, sometimes | 3,1% | 2,7% | 4,3% |
| No | 56,9% | 54,8% | 63,1% |

Percentages of population reporting passive smoking at home

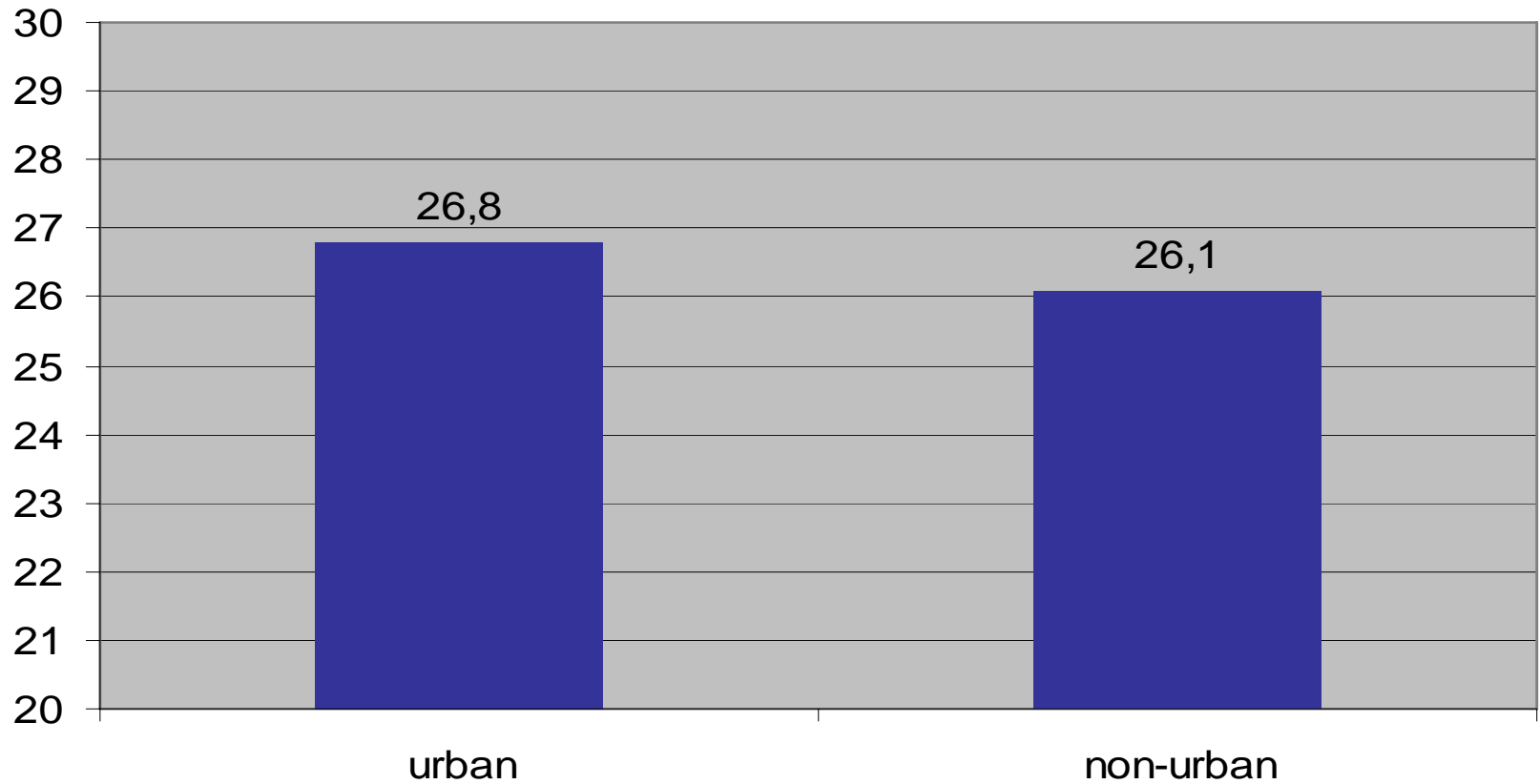


Percentages of population reporting passive smoking at work



Index of balanced diet

(good/acceptable values: < 28)



Body Mass Index



| BMI INDEX | TOTAL | URBAN | NON- URBAN |
|------------------|--------------|--------------|-------------------|
| <25 | 42,3% | 44,9% | 34,8% |
| 25-29,9 | 41,3% | 39,3% | 47,2% |
| 30+ | 16,4% | 15,9% | 18,0% |

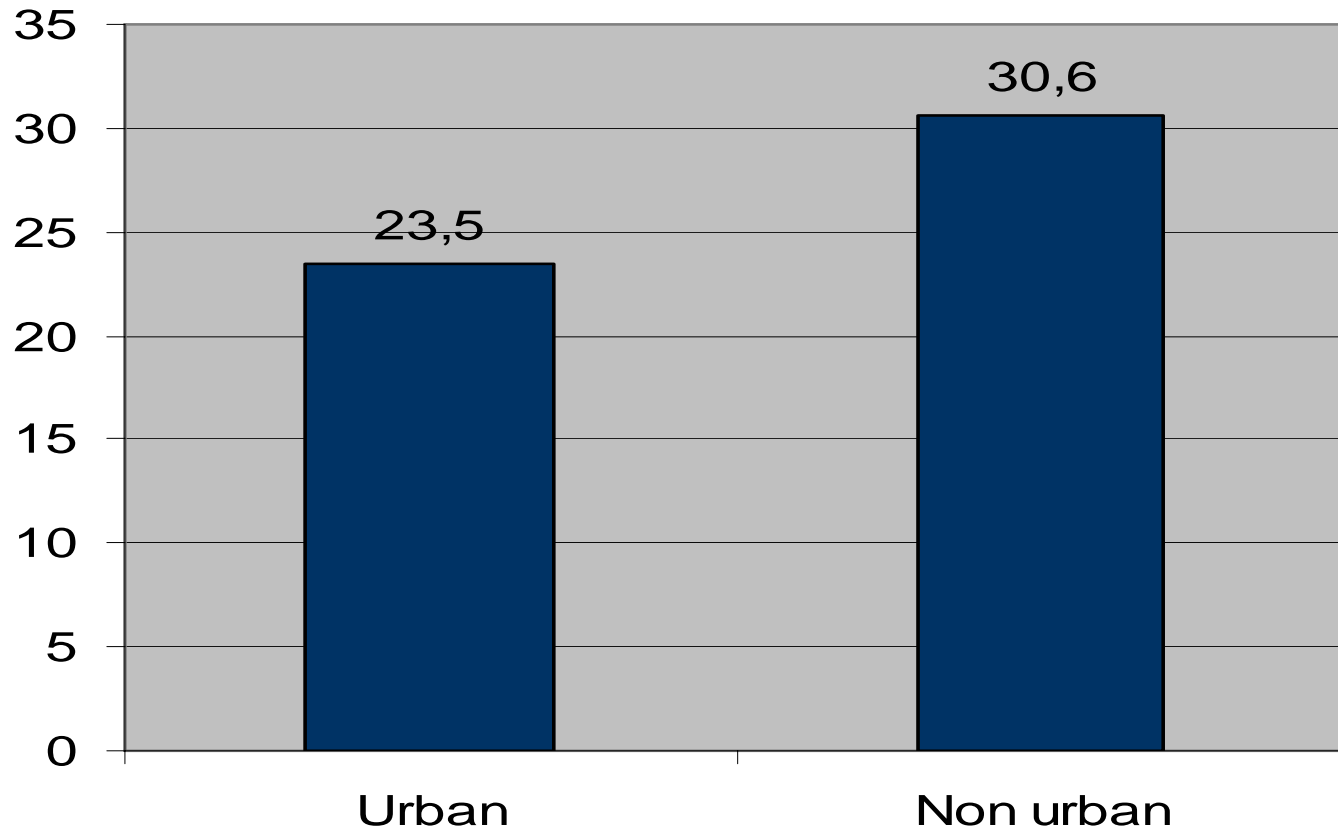
Physical activity levels

measured by the International Physical Activity Questionnaire (IPAQ)

| | Total | Urban | Non-urban |
|-------------------|-------|-------|-----------|
| Inactive | 39,8% | 40,5% | 37,8% |
| Moderately active | 10,7% | 12,0% | 6,6% |
| Active | 9,8% | 10,2% | 8,7% |
| Very active | 39,7% | 37,3% | 46,9% |

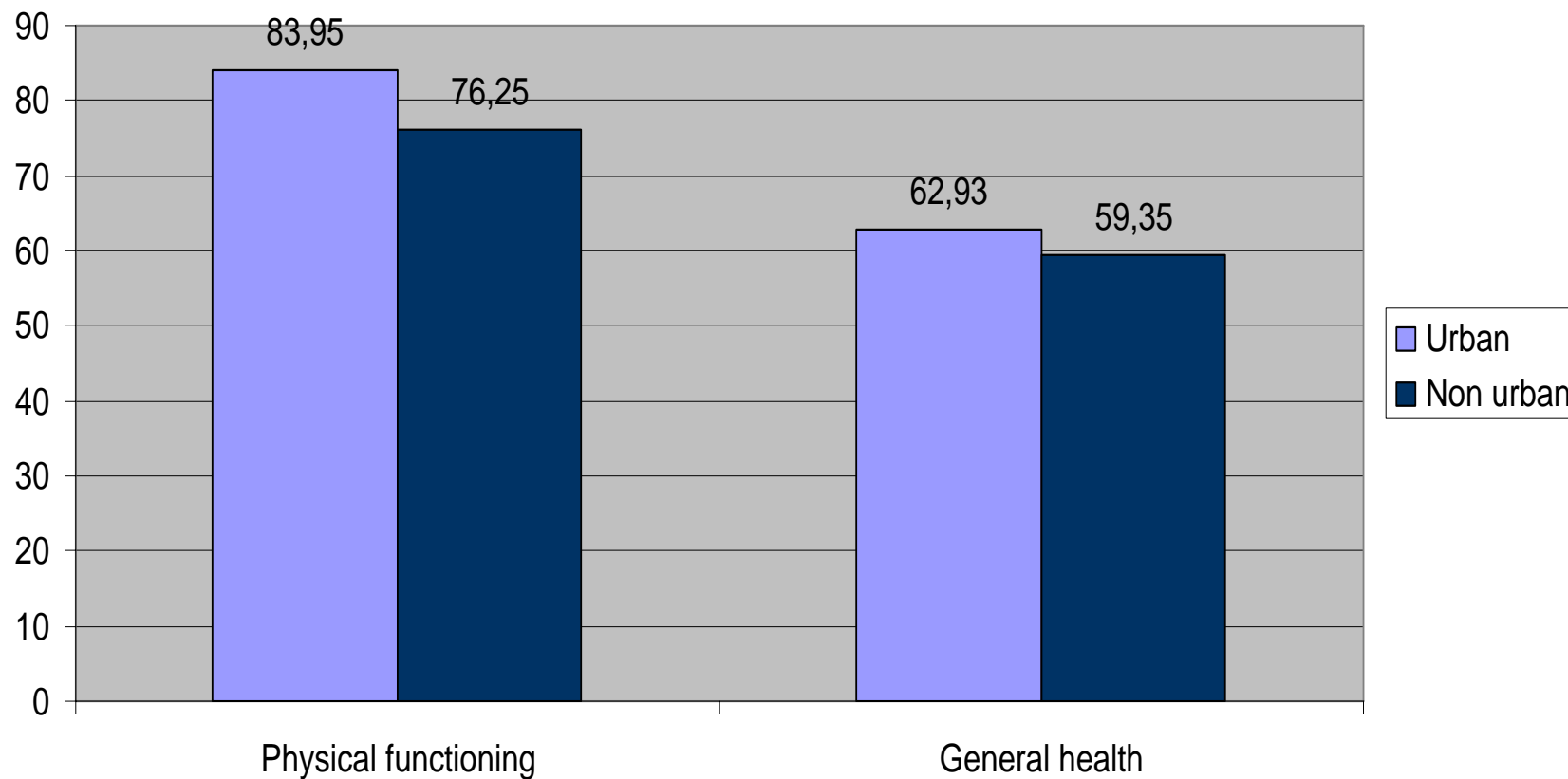
Percentages of population reporting problems with sleep

measured by the Athens Insomnia Scale, Soldatos et al. 2000



Self-reported wellbeing/functioning (SF-36)

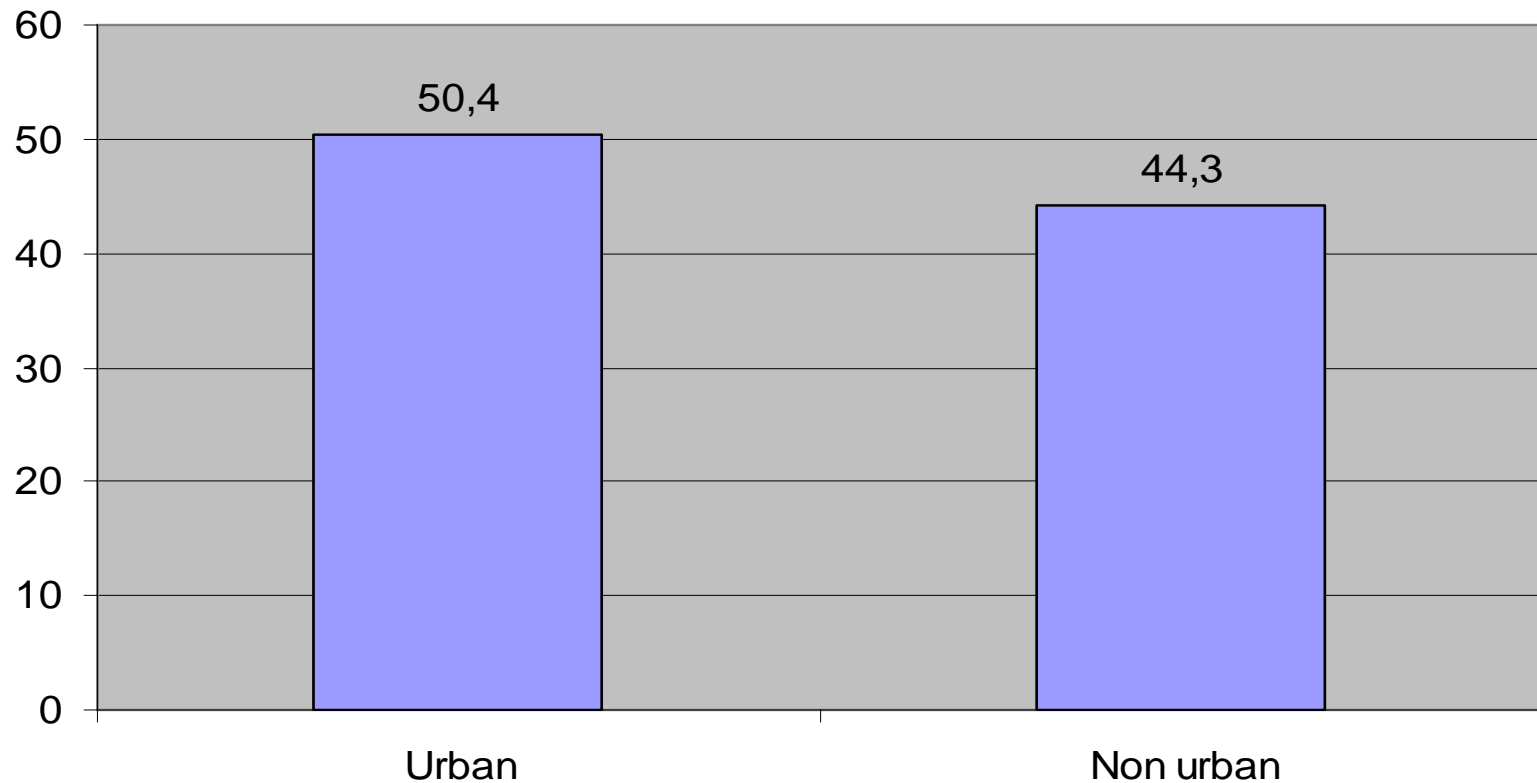
subscales with $p < 0.01$



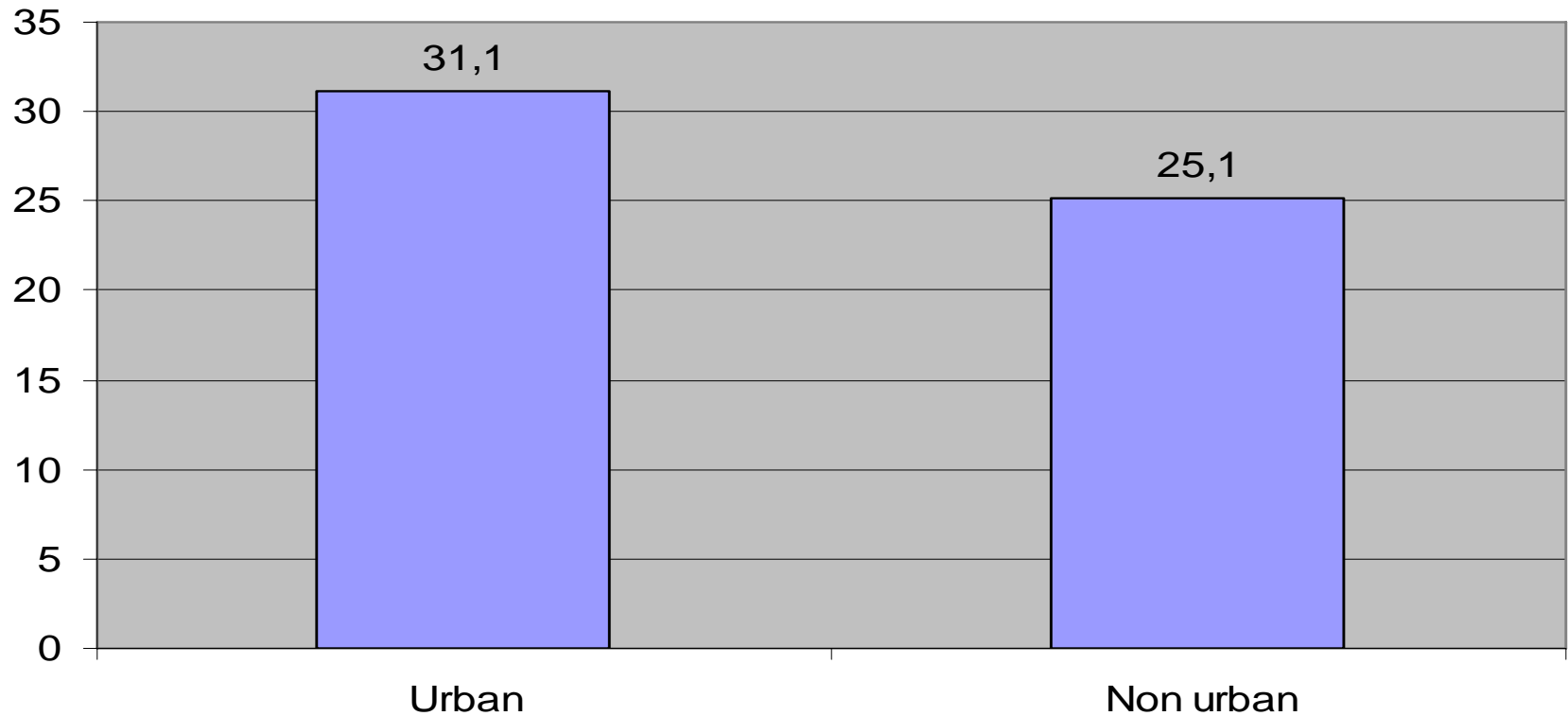
Percentages of population reporting having a screening test at least once

| | urban % | non urban % |
|---|---------|-------------|
| Blood pressure chk | 84,5 | 85,9 |
| Cholesterol chk | 72 | 75,3 |
| Blood sugar test | 73,1 | 76,9 |
| ECG <small>electronic cardiogram</small> | 66,9 | 71 |
| Osteoporosis test | 17,5 | 19,2 |
| SOBT <small>stool occult blood test</small> | 8,8 | 6,7 |
| PSA <small>prostate-specific antigen test</small> | 21,1 | 26,8 |
| DRE <small>digital rectal examination</small> | 13,4 | 12,6 |
| PAP <small>cervical smear test</small> | 69,9 | 67,7 |
| Mammography | 43 | 45,4 |

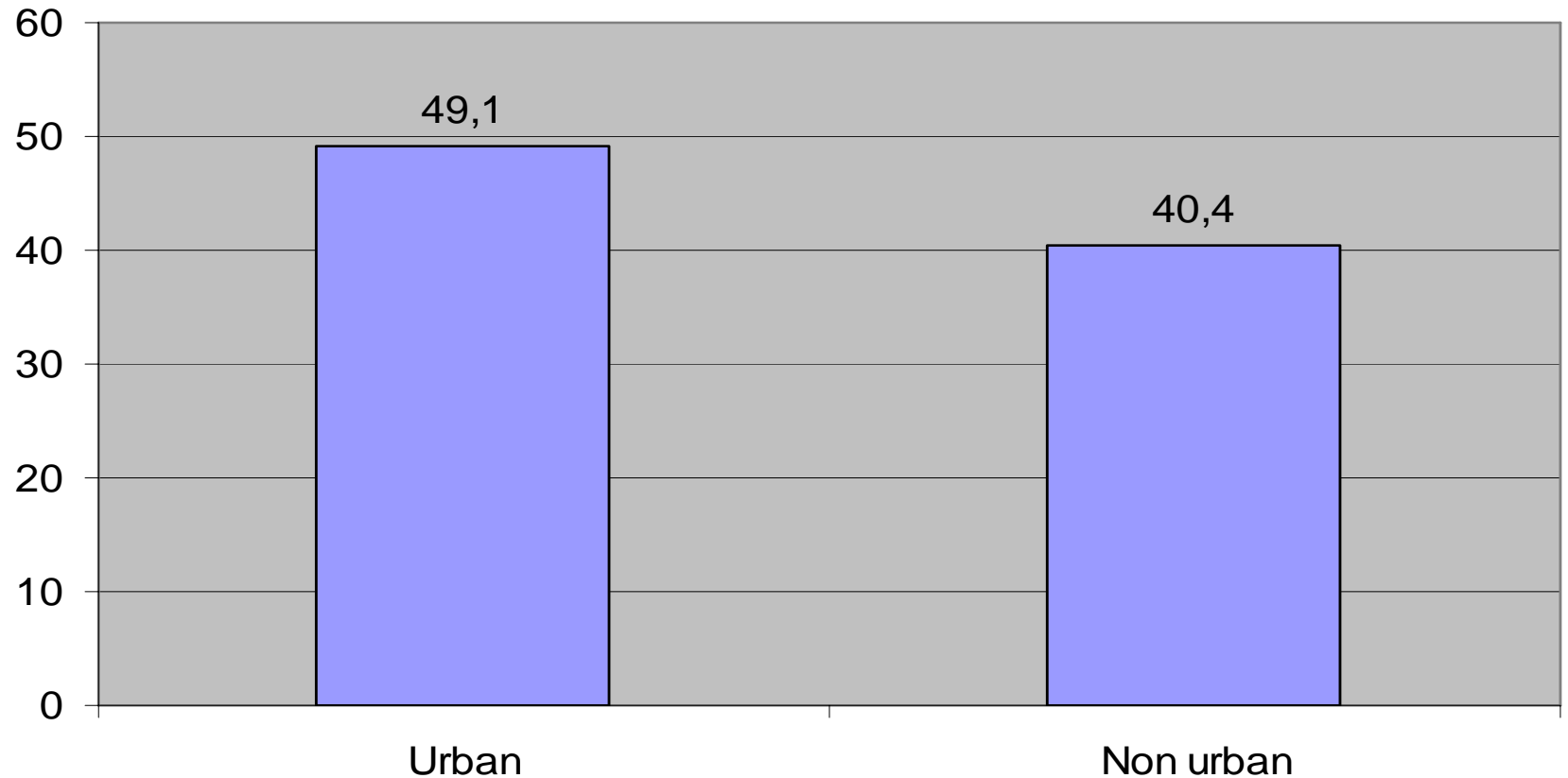
Percentages of population reporting having a family doctor



Percentages of population reporting a visit to a health professional during the past month



Percentages of population reporting visit to dentist during the 12 past months



Percentages of population having a private insurance

